



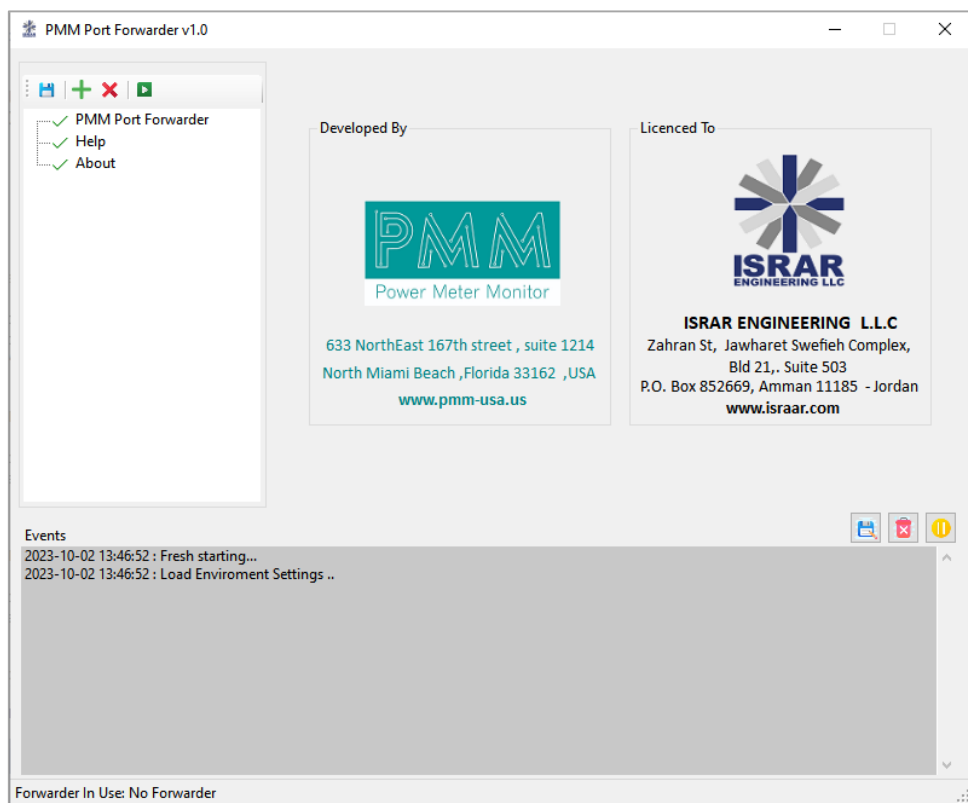
Power Meter Monitor

Business and Mission-

Critical Solutions Provider

Port Forwarder

User Manual



Model: PMM2009

Document: User Manual

Document version: 1.0

Date: October 2023



Contents

PAGE

- 1. Introduction3
- 1.1 Description3
- 1.2 Key Features3
- 2. PMM Port Forwarder3
- 2.1. Adding New Port Forwarder4
- 2.2. Help6
- 2.3. About7

1. Introduction

This Document is a fully descriptive operational manual for PMM’s port forwarder. Providing the operator with the needed information in terms of instructions and screen layout of the monitors, allowing for

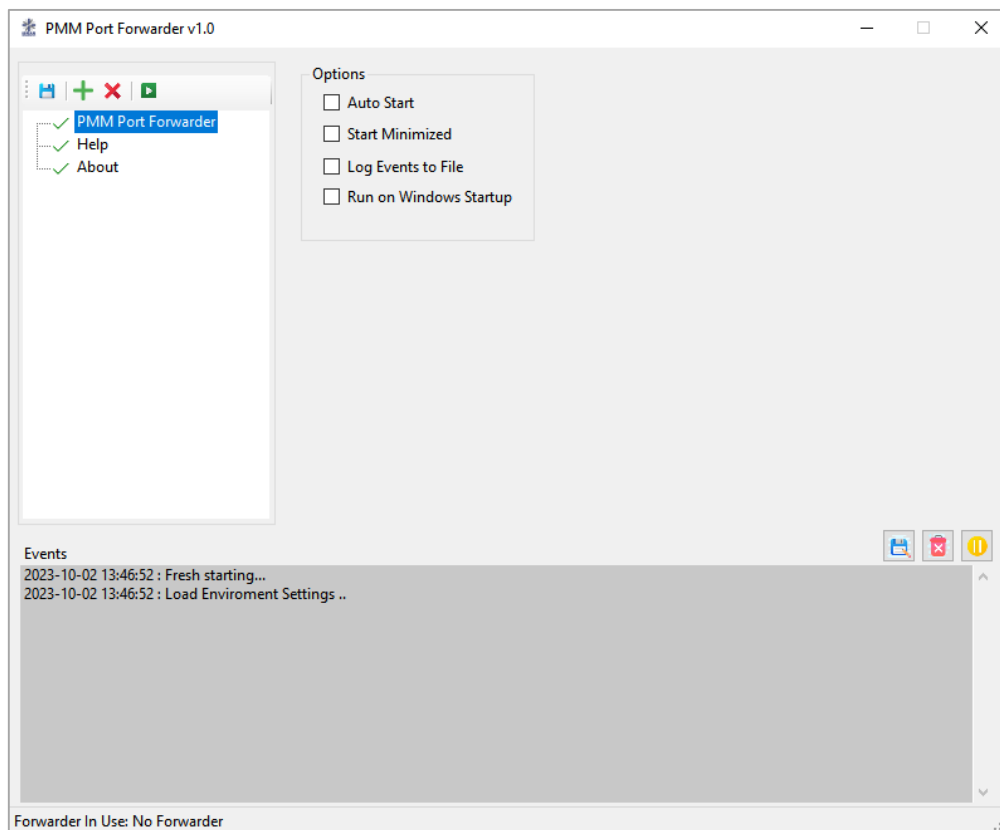
1.1 Description

PMM's Port Forwarder is designed for data forwarding application between ports and allows the user to manage the settings of the source and destination ports.

1.2 Key Features

- Configurable Port Settings
- Cross-Platform Compatibility
- Scalability
- User-Friendly Interface

2. PMM Port Forwarder



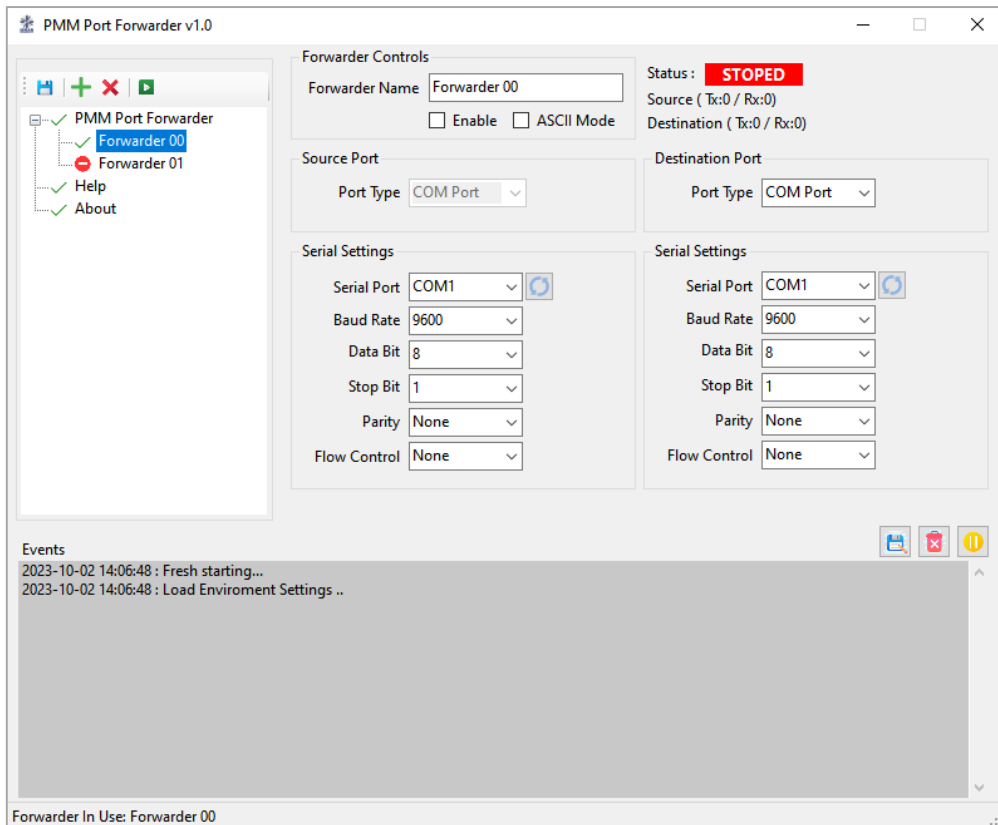
For starting PMM port forwarder there are four options:

1. Auto Start: the program is running automatically when its opened, and appears on the taskbar.
2. Start Minimized: the program is running but in a hidden mode, not appearing in the task bar. The user can find it in the “Hidden icons” in the taskbar.
3. Log Events to file: all the events are logged automatically into a file.

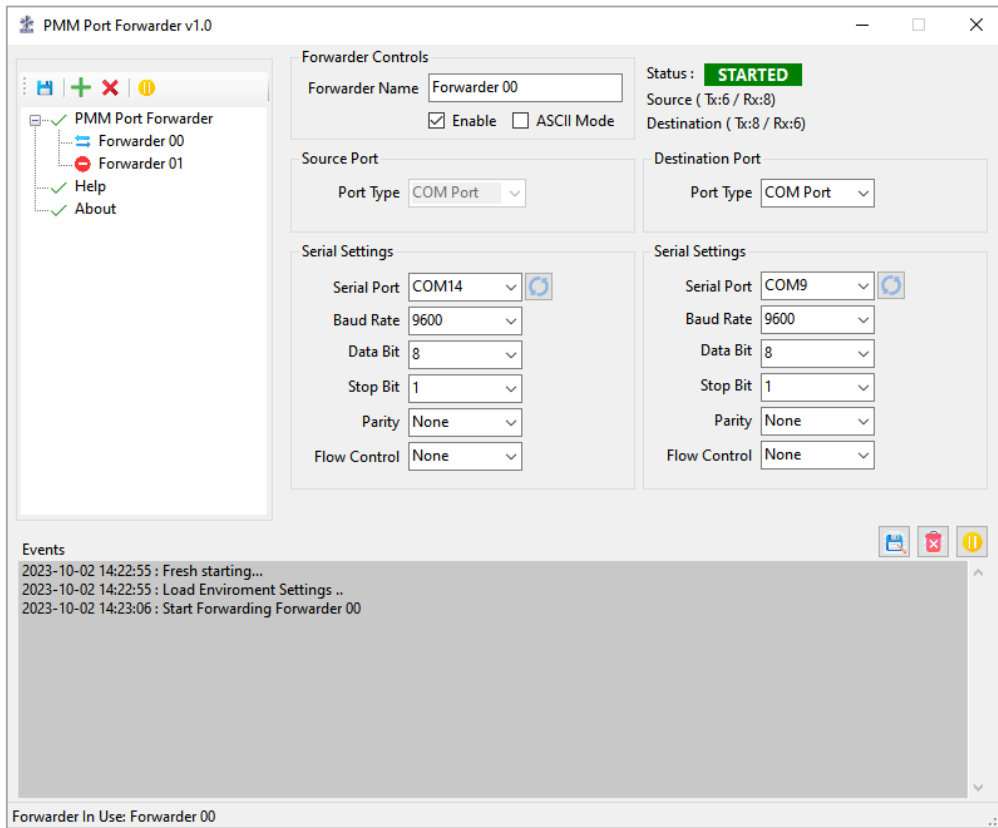
Note: the program saves the user’s starting option and starts by it the next time the user starts the program.

2.1. Adding New Port Forwarder

- Click on the add (+) to add a new port forwarder.
- The source port is always serial port; the destination port can be serial or Ethernet based on the client's application.
- In case the destination port is serial the serial settings need to be configured for both source and destination port as shown in the figure below.
- Choose the COM number the one which the serial port is connected on.
- For the source port; choose the following parameters from the drop lists: baud rate, data bit, stop bit, parity and the flow control.



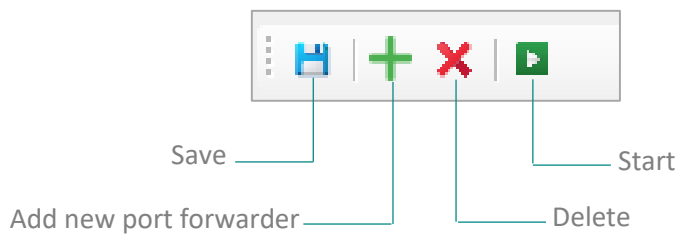
- The status will be **STOPPED** until the user check the enable box and click on “start” in order to start the forwarding.
- Check the “ASCII Mode” if required.
- When the user check “Enable” and click on start the status will be changed to **STARTED** and the number of transmitted and received requests between the source and destination ports will be changes based on the forwarding process as shown in the figure below.



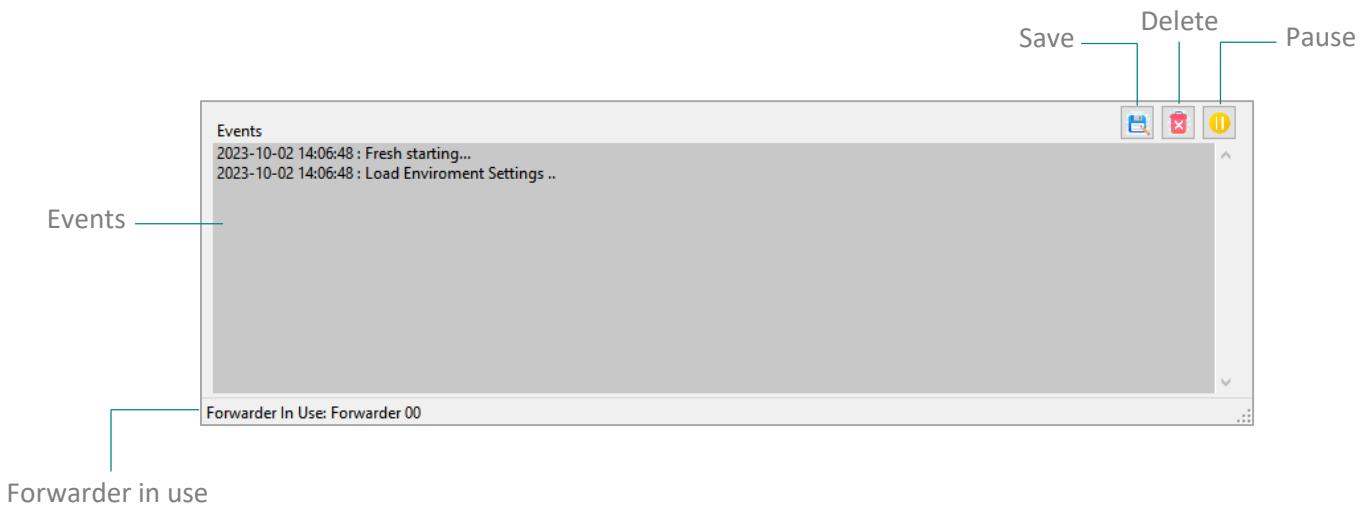
- Click on “Delete” to delete the port forwarder.
- Click on “Save” to save the port forwarder settings; the settings will be saved in the application and automatically be applied when reusing the application.

Note: each forwarder must have a unique port; a port can’t be included in more than one forwarder.

Icons Description:

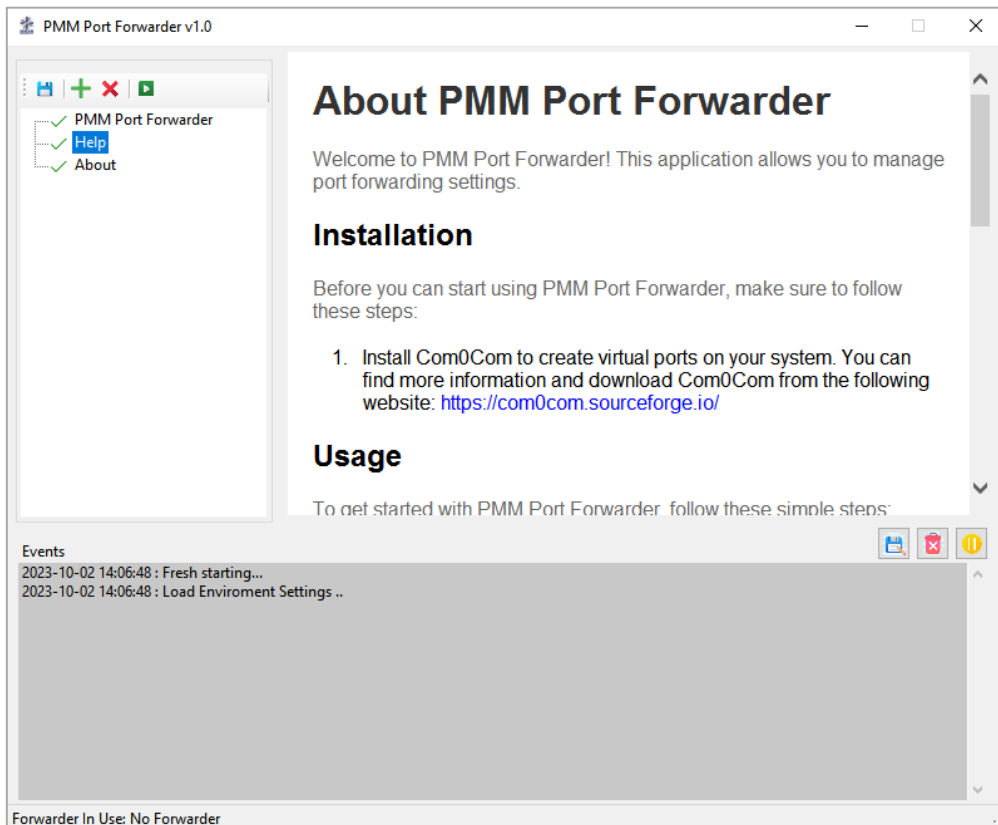


Events' Icons Description:



2.2. Help

Help page provides the user with a quick help on the way of using the port forwarder application, installation instructions, adding and deleting port forwarder.



2.3. About

